

# ECHO™ 2800Xi Series

2800 cfm HRV and ERV



**fantech**®  
a systemair company



## How do you create a new class of HRV/ERVs? You start with a clean sheet of paper...



Fantech's new ECHO™ Class (EC High Output) of heat/energy recovery ventilators are a testament to what's possible when you start with a clean sheet of paper. The result? The ECHO Class clearly stands apart with best in class performance, design, features and usability. When you add to that an obsessive attention to detail, ergonomics and quality, it's no surprise this ECHO Class ERV/HRV is leading the way and leaving everything else in silence.

## Cabinet – Design it to be **quiet, flexible** and **compact**

### 1. Double Wall Construction with 2" Fiberglass Insulation

Quiet / Reduces thermal breaks for less condensation on extremely cold days.

### 2. Reversible Electrical Panel

No more ordering a Right or a Left unit.

### 3. Compact Cabinet Design

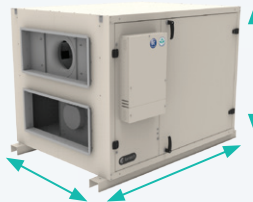
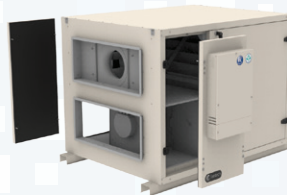
With a compact design, the ECHO 2800Xi series can fit in tight spaces.

### 4. Floor or Ceiling Application

Flexibility of installation.

### 5. G90 Galvanized Construction and Powder Coated

The construction of the HRVs and ERVs makes for a durable finish.



## Components – Use only the best and **energy**

### 1. Slanted Drain Pan

Prevent the formation of mold and mildew.

### 2. Tri-Core Configuration

Easier removal for maintenance.

### 3. Core Locking Mechanisms

Provides optimal efficiency.

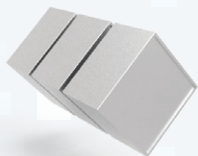
### 4. MERV 13 (Supply) and MERV8 (Exhaust)

The MERV13 and MERV8 filters provides the greatest level of air filtration.

### 5. EC Motors – NO VFDs

ECM products set a new standard in efficiency which goes considerably farther than predecessor with the same output. Energy savings is substantial, especially at part load conditions.

**best** components, with IAQ **savings** in mind



**Controls** – Make it **easy**, make it **smart**

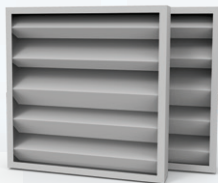
### 1. Wall Control

Easy field configuration



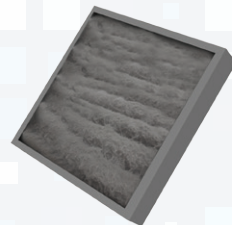
### 2. Digital Readout and Setup of Both Supply and Exhaust Airflows

Makes for a trouble free auto-balancing of the ECHO unit.



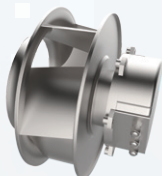
### 3. Pressure Sensors and Temperature Sensors Included

All sensors are provided with the unit for a faster installation.



### 4. Dirty Filter Alarm

Very easy way to know which filter needs to be changed.



### 5. High and Low Voltage Component Separated

Divided by separated electrical box for safe commissioning.



Specifications	ECHO H2800Xi	ECHO E2800Xi
CFM @ 0.4" Ps	2,800	2,800
Motors	2x ECM Motors	2x ECM Motors
Voltage	200 – 240 V	200 – 240 V
Phase	1~	1~
Current	12.2 A	12.2 A
Power rated, per motor	1,300 W	1,300 W
MCA	14 A	14 A
MOP	20 A	20 A
Operational temperature	-25/40°C (-13/104°F)	-25/40°C (-13/104°F)
Weight	850 lbs (386 kg)	750 lbs (340 kg)





**Customer Support:**

Canada

800.565.3548

CANADAsupport@fantech.net

USA

800.747.1762

USsupport@fantech.net



**Send Orders:**

Canada

877.747.8116

CANADAorders@fantech.net

USA

800.487.9915

USorders@fantech.net

Fantech reserves the right to modify, at any time and without notice, any or all of its products' features, designs, components and specifications to maintain their technological leadership position.



**fantech**®  
a systemair company